



CITY OF COURTENAY  
 Building Division  
 830 Cliffe Avenue  
 Courtenay, BC V9N 2J7  
 Tel: 250-703-4862  
 building@courtenay.ca

# Party Wall Fire Separation Construction

## 9.10.3.1. Fire-Resistance and Fire-Protection Ratings

1) Where a fire-resistance rating or a fire-protection rating is required for an element of a building, the rating shall be determined in conformance with an approved construction as detailed in the BC Building Code or other approved tested assemblies.

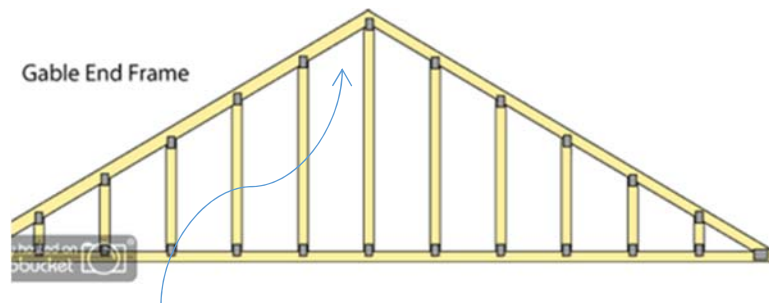
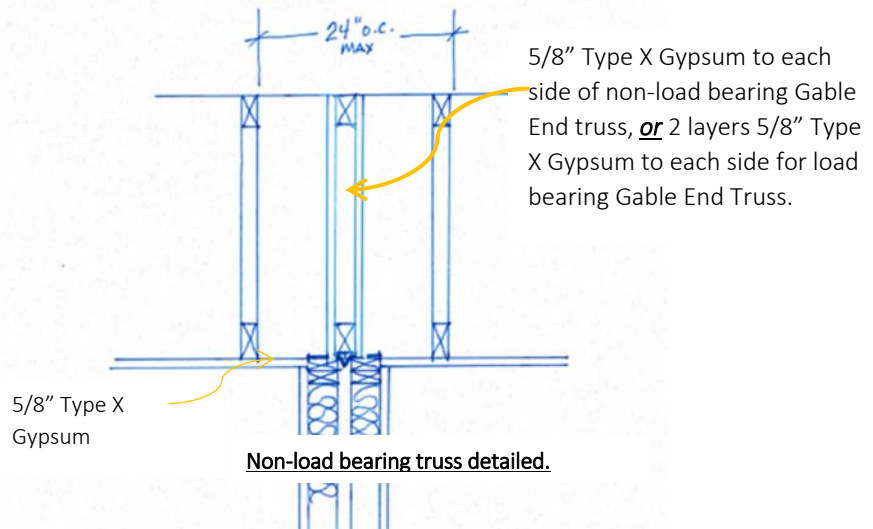
## 9.10.9.2. Continuous Barrier

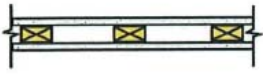
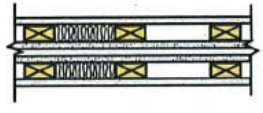

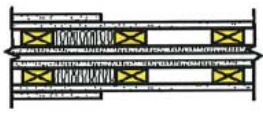
1) A wall or floor assembly required to be a fire separation shall be constructed as a continuous barrier against the spread of fire and retard the passage of smoke.

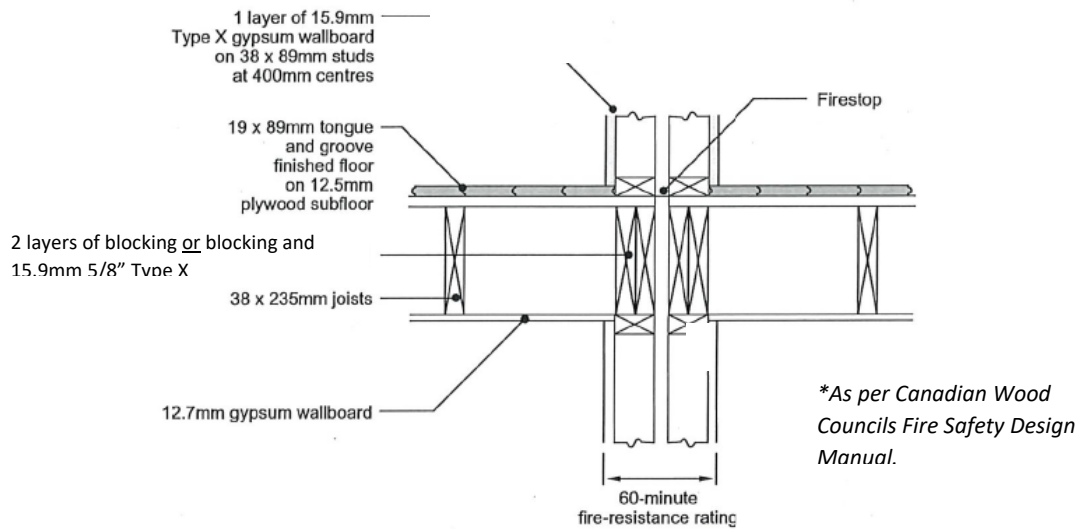
2) The continuity of a fire separation shall be maintained where it abuts another fire separation, a floor, a ceiling, a roof, or an exterior wall assembly.

## 9.10.9.10. Concealed Spaces above Fire Separations

1) A horizontal service space or other concealed space located above a required vertical fire separation shall be divided at the fire separation by an equivalent fire separation within the space.



	Category	Illustration	Construction	Report Number
1 -Hour Rating	Attic Separation Non-Bearing		Nominal 2x3 or 2x4 flat 24" o.c. single wall <b>1 layer 5/8" gypsum each side</b> (UL classified for use in L501, G512, or U305) Optional max 1" batt glass fiber or mineral wool insulation (BZJZ) Optional proprietary sprayed insulation to fill cavity	UL: U338
	Attic Separation Non-Bearing		Nominal 2x3 or 2x4 flat 24" o.c. double wall <b>1 layer 5/8" gypsum each side</b> (UL classified for use in L501, G512, or U305) Septum sheathed with plywood or mineral and fiber boards Optional max 1" batt insulation Optional sprayed insulation	UL: U339
	Attic Separation Bearing		Nominal 2x3 or 2x4 flat 24" o.c. single wall <b>2 layers 5/8" Type X gypsum each side</b> Optional max 1" batt insulation Optional sprayed insulation	UL: U338
	Attic Separation Bearing		Nominal 2x3 or 2x4 flat 24" o.c. double wall <b>2 layers 5/8" gypsum each side</b> (UL classified for use in L501, G512, or U305) Optional plywood or mineral and fiber board sheathing in septum Optional max 1" batt insulation Optional proprietary sprayed insulation to fill cavity	UL: U339



**Note:** The two layers of blocking are required when joists are parallel or perpendicular to the wall.

*Sound absorbing materials or systems will need to be added to these details to ensure compliance with the minimum STC ratings according to the BC Building Code.*